

Print Instructions/Specs

for ESF Outreach

Booklet

Specifications:

- Document size: Letter (8.5" x 11")
- Recommended paper: 100# glossy text
- Full bleed
- Full color
- Duplexed
- Saddle-stitched

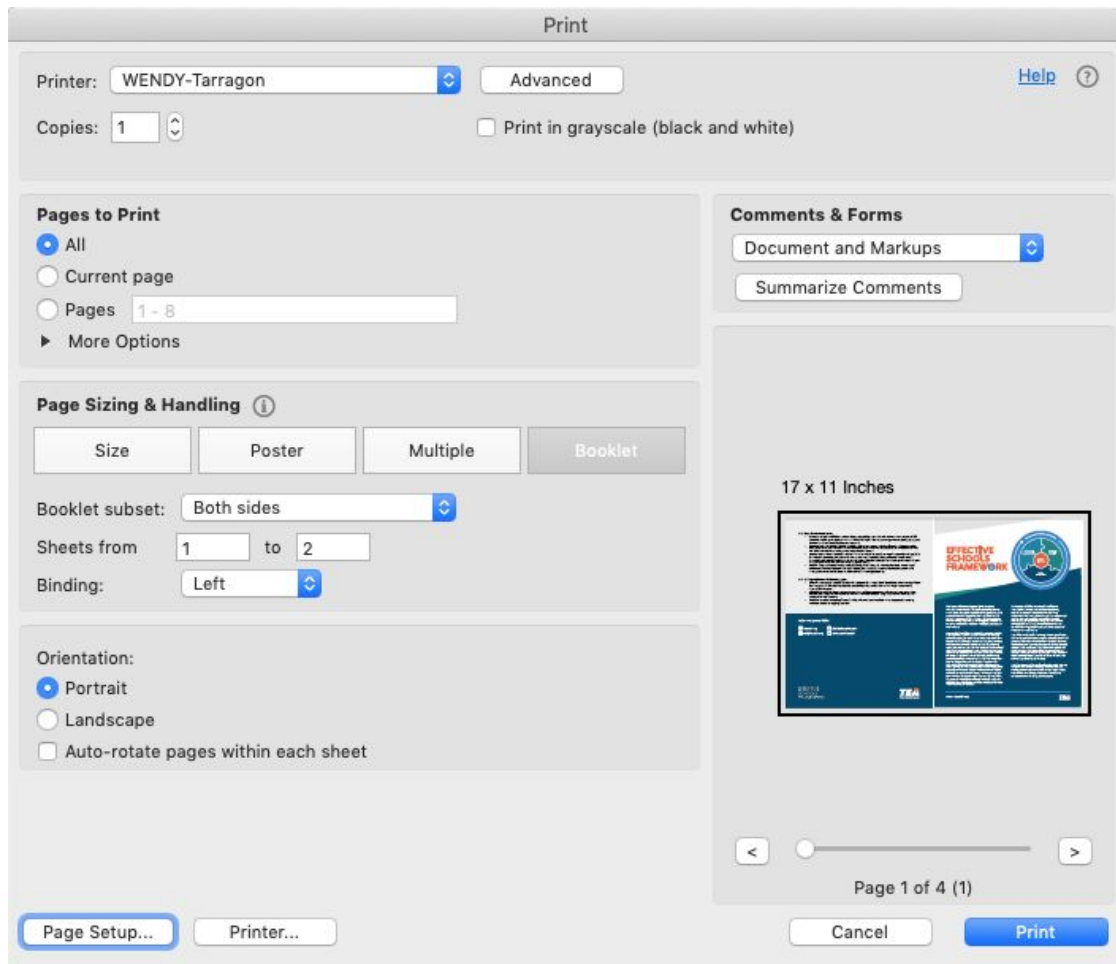
To print locally from Adobe Acrobat, select the following settings.

Pages to Print:

- All

Page Sizing and Handling:

- Select Booklet
- Orientation: Portrait



Be sure to change the paper size to Tabloid in the Page Setup screen.

